



## FPS-1001

# Direct Attached 10/100Mbps Fast Ethernet Print Server

The FPS-1001 allows you to share parallel printer over any network. It is not only giving network users greater flexibility, but also removing the load from the file server. Thus the product enhances printing performance as well as overall network performance. In addition, by our Windows based installation program, configuration can be completed in minutes. Equipped with the printing interface – DB36, the FPS-1001 provides a direct connection to your printer.

The FPS-1001 is configurable through a Web Browser or a Windows-based management utility. With various network printing methods including Windows Peer-to-Peer printing, NetWare and Windows server based Queues printing, LPR printing, Internet Printing Protocol (IPP), Mail Printing and AppleTalk for Macintosh, the FPS-1001 is the ideal solution for printer sharing in every network.

### ▶▶ KEY FEATURE

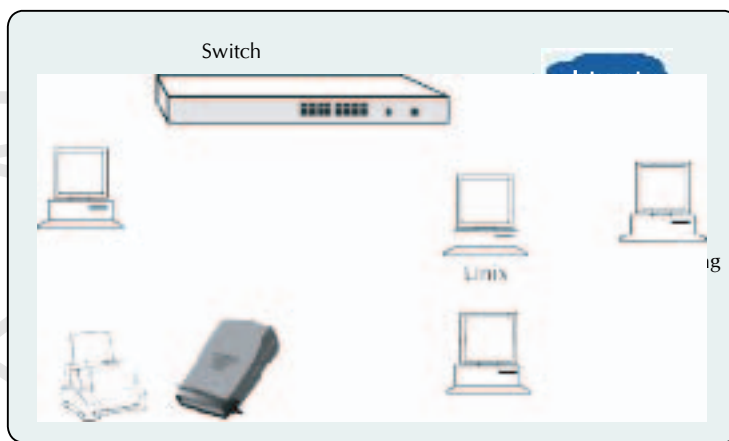
- ❑ **Support for most popular NOS**  
Unix, Linux: TCP/IP, LPD, TFTP  
Windows: LPR, PTP driver, IPP  
Apple: EtherTalk Chooser  
NetWare 5.0 or above: TCP/IP
- ❑ **Auto-Sensing**  
Supports 10/100Mbps Auto-Nway, Automatically Negotiates optimal mode, 10/20Mbps, 100/200Mbps Ethernet 802.2, Ethernet 802.3, SNAP Auto-Detect
- ❑ **Support up to 3 logical printers for TCP/IP networks**  
Handles up to 3 logical printers, users can easily redirect to their own "name" printer without confusion
- ❑ **Easy Management**  
Intuitive management utility provided for Windows 95/98/2000/Me/NT/XP/Server 2003 or Web-Base Management
- ❑ **User Access Control**  
Provides a MAC table for network administrator to manage the printing tasks from authorized users
- ❑ **Internet Printing Protocol (IPP) Support**  
FPS-1001 can act as IPP (Internet Printing Protocol) Server, allowing your clients, suppliers, and colleagues to operate your printers from anywhere on the Internet. Windows IPP Client software is also supplied.
- ❑ **Support UPnP function**  
UPnP users can locate this print server in Network Neighbor once it is connected.

▶▶ SPECIFICATION

Product	Direct Attached 10/100Mbps Fast Ethernet Print Server
Model	FPS-1001
Printer Connector	1 * 36-pin Centronics (male)
Ethernet Connector	1 * 10/100Base-TX
LEDs	3; PWR, LPT, LNK
Protocol Support	TCP/IP, NetBEUI, AppleTalk, HTTP, IPP, DHCP, LPR
Power Input	5V DC, 2.5A
Cabling Type	10Base-T UTP Cat 3 or better 100Base-TX UTP Cat5 or better
Network Speed	10/100Mbps, Half-Duplex mode 20/200Mbps, Full-Duplex mode
Dimension (L * W * H)	92 x 63 x 32 (mm)
Weight	63g
Environmental Specifications	Operating Temperature : 0~50 degree C Storage Temperature: -25 ~ 75 degree C Operating Humidity: 5~95% Storage Humidity: 5~95%
EMI	CE, FCC Class B
Remark	GDI interface printer does not support FPS-1001

▶▶ PRODUCT POSITIONING

- All the users that work with different OS, such as Windows, Linux, Mac OS and Novell can print to the printer via FPS-1001 at the same time.  
Secondly, as soon as the print server is assigned with a legal IP address, not only local users, but also Internet users can connect to the attached printer through Internet with IPP printing function for satisfying the printing needs.



Ethernet Connect Mode

▶▶ ORDERING INFORMATION

- ▶ **FPS-1001** Direct Attached 10/100Mbps Fast Ethernet Print Server



**PLANET Technology Corp.**

11F, No. 96, Min Chuan Road, Hsin Tien, Taipei, Taiwan, R.O.C.  
 TEL:886-2-2219-9518 FAX:886-2-2219-9528  
 E-mail: sales@planet.com.tw http://www.planet.com.tw  
 VoIP Gateway : vip.planet.com.tw

Planet reserves the right to change specification without prior notice  
 All brand names and trademarks are property of their respective owners  
 Copyright 2004 © PLANET Technology Corp. All right reserved

