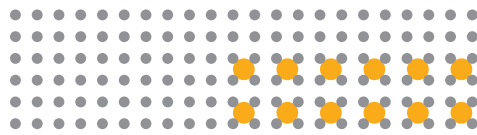


Alcatel-Lucent 8 SERIES Extended Edition

So much more than just a phone!

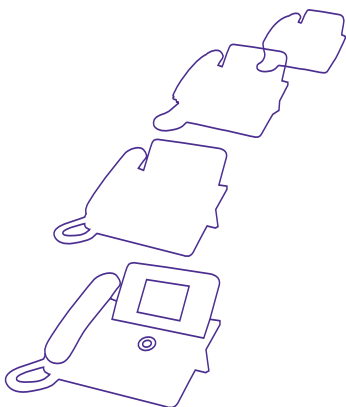


"i am not a phone..."

- ▶ I am your Hotel Concierge
- ▶ I am your Security Agent
- ▶ I am your Contact Center agent
- ▶ I am your Meeting Room Assistant
- ▶ I am your Factory Administration Assistant
- ▶ I am your Personal Assistant

In fact, IP Touch can be what you want it to be.

It is nothing short of a communications revolution – an entirely new applications-based enterprise media, fully open to any application or service you can imagine.

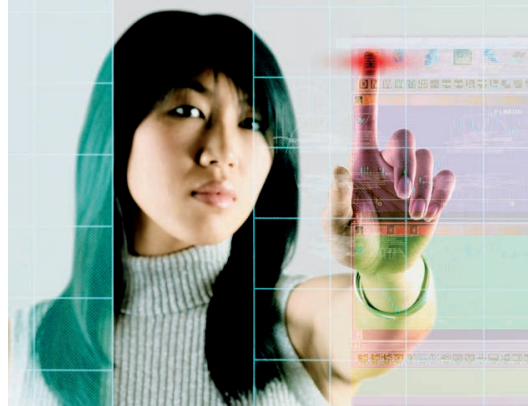


ip touch



SO MUCH **MORE** THAN JUST A PHONE!

Alcatel-Lucent



Alcatel-Lucent **8** SERIES EE

TURBO CHARGED PHONES

As part of the Alcatel-Lucent professional line, these state-of-the-art IP phones are full-featured with integrated IP connectivity and telephony, bringing you the converged power of data and voice over IP.

Besides its ability to support any web-based business application, IP Touch brings you optimized design, high-resolution, adjustable color or grayscale displays; superior listening quality and ring tones, plus the freedom and connectivity of Bluetooth® wireless technology.

INSTANT BUSINESS COMMUNICATIONS

IP Touch phones are always on, ready to provide the best communication service whenever you need it and to connect to other devices and applications in realtime.

You'll find them fast, with easy-to-use feature buttons and interactive soft keys, making them the ideal focal point for all your business communications.

AN UNBEATABLE RANGE OF TELEPHONY FEATURES

IP Touch offers the full range of telephony services found in Alcatel-Lucent's acclaimed OmniPCX servers – Enterprise and Office – unsurpassed in terms of functionality, features, reliability and quality of service.

8 SERIES EE

Alcatel-Lucent 8 SERIES Extended Edition

Who can I be for you?

Move on up to IP Touch for a wealth of services, from unified communication to security, travel and meeting room management:



AM YOUR PERSONAL ASSISTANT"

- Provide a single multimedia mailbox for all messages including voice, e-mail and fax*
- Never miss unanswered VIP calls thanks to the call log*
- Access the universal directory service easily*
- Offer a "find me, follow me" facility to avoid caller frustration when trying to reach you*
- Don't be bothered by non-urgent calls when meeting important customers*
- Record time spent on the phone and produce a periodic time report by client/file or by-the-hour billing
- And a host of other features...

*Alcatel-Lucent **OmniTouch** Unified Communication is available on Alcatel-Lucent **OmniPCX** Enterprise.



AM YOUR CONTACT CENTER AGENT"

Advanced & intuitive functionalities to boost Contact Center agents' personal efficiency including:

- Login/logout in group + Password management
- Agent status (On/Off Duty, Pause, Wrap-Up)
- Group monitoring
- Queue information display
- Saturation indicator



AM YOUR SECURITY AGENT"

- Access control: survey the entrance to the building/parking lot/remote building (video) and control door opening from any Alcatel-Lucent IP Touch phone
- Building control: for any type of alarm, directly control the building security functions (such as closing doors to cut off a fire, alerting employees and security services)
- Alarm management: immediate broadcast on IP Touch to all parties specified by company security procedure

IN-BUILT SECURITY

Rest assured, the "IP" in Alcatel-Lucent IP Touch is fully secured against intrusion, eavesdropping or hacking. With its powerful armory, you benefit from the openness of an applications world safe from the risk of outside attack.

AND MUCH MORE...

Remember, these existing services are just the beginning: your own applications can be developed – by you or one of our applications partners – to customize IP Touch to the unique demands of your business, thanks to its XML interface*.

*Not available on Alcatel-Lucent 4018 EE and 4008 EE IP Touch phones.



ip touch Enhanced functionality

■ SUPERLATIVE SOUND QUALITY

Alcatel-Lucent IP Touch provides the very best in sound quality thanks to a range of new advancements. IP Touch phones offer a comprehensive range of polyphonic ring tone melodies. Its full-duplex, hands-free speakerphone with acoustic echo cancellation, takes listening comfort to new levels.

IP Touch has been designed to take the fuss out of communication, whatever the sound source. It enables a smooth, automatic transfer from headset to hands-free for group listening without the need to remove the handset from its cradle. Its top-end model offers communication with *Bluetooth*[®] wireless technology. And it provides a built-in audio port for the use of a headset, additional speaker or teleconferencing system*. The Alcatel-Lucent 4068 EE IP Touch phones support a *Bluetooth*[®] 1.2 wireless handset.



■ OPTIMIZED ERGONOMICS

IP Touch phones come in an attractive, futuristic design and are available in ice blue or urban gray. But they don't just look the part - they are also conceived to ensure the simplest, most intuitive, access to the powerful features of the Alcatel-Lucent OmniPCX systems.



■ NAVIGATOR

The Alcatel-Lucent IP Touch phone navigator feature makes the display more user-friendly by allowing you to scroll up, down, left and right. The navigator, along with the context-sensitive soft keys, provides easy access to the Alcatel-Lucent's many features.

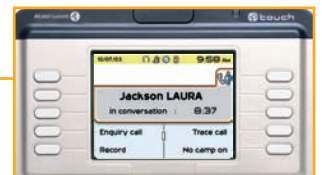
■ DEDICATED FUNCTION KEYS

At the push of a button, gain direct access to your mailbox or directory, simply redial or ask the terminal for help. Audio control functions (loudspeaker volume control, hands-free audio control, mute, etc.) are separate from the system's functional keys to facilitate easy and clear audio control for the user.



■ DISPLAY

The Alcatel-Lucent IP Touch application phones offer rich visual information on large, adjustable displays. These range from a one-line screen of 20 characters on the most basic model to a graphical 1/4 VGA display with 4096 colors on the most advanced phone.



■ INTUITIVE ICONS AND SOFT KEYS

Determining the status of a call is simple with the help of easy-to-understand icons. The phones' smart soft functions change according to the call context, with the functions displayed on the screens. So you always get the right feature at your fingertips at the right time. Extra programmable keys are provided to further customize usage.

■ ALPHANUMERIC KEYBOARD

The Alcatel-Lucent 4028 EE, 4038 EE and 4068 EE IP Touch phones are equipped with an alphabetic keyboard, which provides access to the "call by name" company directory and to messaging services.



Feature-rich terminals

Alcatel-Lucent
8 SERIES EE



	4068 EE	4038 EE	4028 EE	4018 EE	4008 EE
DISPLAY	Adjustable graphical display	Adjustable graphical display	Adjustable graphical display	Character display	Character display
Resolution	240x320 pixels 1/4VGA	100x160 pixels	64x128 pixels	20 characters	20 characters
Size	74x56 mm	78x51 mm	70x38 mm	75x12 mm	75x12 mm
Color	4096 colors	4 gray levels	Black & White	Black & White	Black & White
Back Light	■	-	-	-	-
KEYS					
Contextual keys	2x5 contextual keys	2x5 contextual keys	2x3 contextual keys	-	-
Programmable keys	Up to 70 soft keys* Up to 40 soft keys** 2 personal keys/LED	Up to 70 soft keys* Up to 40 soft keys** 2 personal keys/LED	Up to 70 soft keys* Up to 40 soft keys** 2 personal keys/LED	6 keys with LED	6 keys with LED
Navigator	4 directions	4 directions	4 directions	2 directions	2 directions
Validation (OK) & exit keys	■	■	■	■	■
Message key + LED	■	■	■	■	■
End key	■	■	■	■	■
Redial key	■	■	■	■	■
Help key	■	■	■	■	■
Alarm LED (2 colors)	■	■	■	■	■
Hands-free key with LED	■	■	■	■	■
OTHER FEATURES					
Hands-free mode	■	■	■	■	■
External loudspeaker	■	■	■	■	■
Volume keys +/-	■	■	■	■	■
Mute key with LED	■	■	■	■	■
Handset	Comfort	Comfort	Comfort	Comfort	Standard
Specific headset plug 3.5 mm	■	■	■	■	■
Alphabetic keyboard	■	■	■	■	■
Dial by name	■	■	■	■	■
Bluetooth® 1.2 wireless techn.	■	-	-	■	■
IP CHARACTERISTICS					
Additional					
PC connectivity with switch	Gigabit Ethernet 10/100/1000	Gigabit Ethernet 10/100/1000	Gigabit Ethernet 10/100/1000	Fast Ethernet 10/100	-
External power supply	■	■	■	■	■
IEEE 802.3af full compliance	■	■	■	■	■
Class of consumption	Class 3	Class 2	Class 2	Class 2	Class 2
Ethernet auto-sensing & configurable	■	■	■	■	■
Alcatel DHCP server disabling	■	■	■	■	■
VLAN management	■	■	■	■	■
ACCESSORIES					
Wall mount kit	Option	Option	Option	Option	Option
60° foot-stand	Option	Option	Option	Option	Option
Additional 10&40 key modules	Up to 50 keys* Up to 120 keys**	Up to 50 keys* Up to 120 keys**	Up to 50 keys* Up to 120 keys**	-	-
Smart display module	3 modules max	3 modules max	3 modules max	-	-
Bluetooth® 1.2 wireless handset	Option	-	-	-	-
WEIGHT	1070 grams	1020 grams	1015 grams	790 grams	790 grams
DIMENSIONS (LxDxH)					
Phone only	240x188x133mm	240x180x133mm	240x175x133mm	220x175x133mm	220x175x133mm
Wall mounted	240x100x218mm	240x100x208mm	240x100x203mm	220x100x203mm	220x100x203mm

*on Alcatel-Lucent OmniPCX Enterprise **on Alcatel-Lucent OmniPCX Office

Alcatel-Lucent 4008 EE IP Touch phone. Enter the world of IP telephony

Enter the world of IP telephony with this superb, no-frills phone. Behind its disarming simplicity lies a hugely powerful phone, including a one-line 20 character display; a two-directional navigator for user-friendly scrolling; hands free; direct access to the directory and mailbox; an external loudspeaker and six programmable keys.

EXTEND THE CAPABILITIES OF YOUR PHONE WITH ADD-ON MODULES

Grow with your IP Touch. Add further functions and direct-dial keys. You can see at a glance if your colleagues' lines are busy. Choose the number of keys you need from three modules:

- Ten additional keys.
- A newly designed smart display module with 14 additional direct access buttons and a large LCD display, allowing for quick and easy "paperless" identification of associated buttons.
- 40 extra keys, turning your phone into a switchboard, with direct access to all internal extensions and their current status (busy, free, etc.)

WITH A GREAT RANGE OF HEADSETS...



Monaural

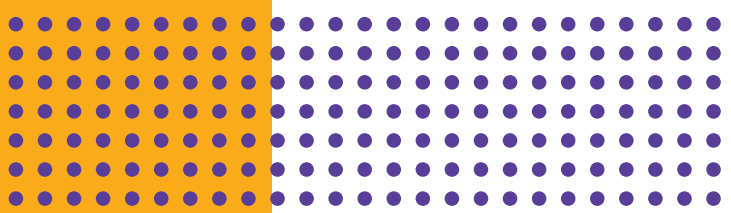


Binaural

BLUETOOTH® wireless technology freedom

Alcatel-Lucent 4068 EE IP Touch comes complete with Bluetooth® wireless technology, enabling audio connectivity to any external Bluetooth® wireless technology enabled device and, in the future, data connectivity.

- Alcatel-Lucent 4068 EE IP Touch phones now support a Bluetooth® 1.2 wireless handset: free up your communications with a wireless handset allowing employees to roam or access material or people away from the immediate vicinity of the desktop while continuing a call.
- Conferencing station equipped with Bluetooth® wireless technology: forget the crossed wires when setting up a group conference call. Now you just place the Bluetooth® wireless technology enabled conference station on the table and Alcatel-Lucent IP Touch does the rest.
- Any wireless headset featuring Bluetooth® technology.



Phones



4288489 - EN - 04/2008- Alcatel Business Systems - 32, avenue Kléber
92707 Colombes - France - RCS Paris B 602 033 185.

Alcatel, Lucent, Alcatel-Lucent and the Alcatel-Lucent logo, are trademarks of Alcatel-Lucent. All other trademarks are the property of their respective owners. Alcatel-Lucent assumes no responsibility for the accuracy of the information presented, which is subject to change without notice. © 2008 Alcatel-Lucent. All rights reserved. Photos: Getty Images - Printed in EEC on chlorine-free paper. *The Marketinggroup*